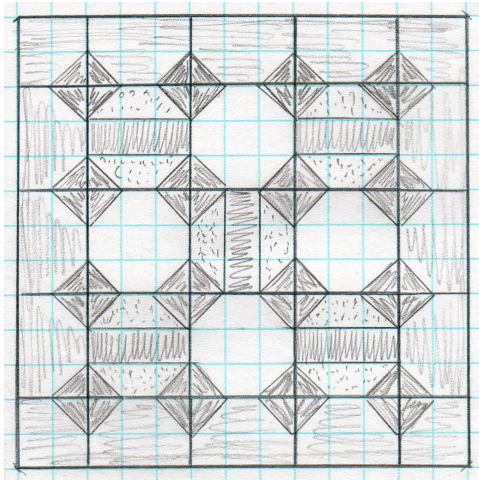


Cookie Plate Crumb Catcher

Choose fabrics to resemble your favorite cookies and bars!



SUPPLIES YOU'LL NEED

13 x 13" table topper

Six fat quarters ~ cookies, corner flips,
dark bars, light bars,
binding and backing
1/2 yard cotton batting
Thread to match
Basic sewing supplies

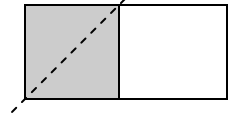
Layer cake friendly ~ pull one background,
one for cookies, one for bars, two for
corner flips, two for borders, three for
binding, four for backing.

Cutting the block

- Cut 4—3 1/2 x 3 1/2 for cookies
- Cut 36—1 1/2 x 1 1/2 for corner flips
- Cut 5—1 1/2 x 3 1/2 dark bars
- Cut 10—1 1/2 x 3 1/2 light bars

Assembling the block

1. Draw a diagonal line on the back of each 1 1/2" square.
2. Pin the 1 1/2" squares to each corner of the 3 1/2" squares so the line goes diagonally across the corner.
3. Stitch on the line. Trim the seam to 1/4" and press away from the center.
4. On each of the light colored 1 1/2 x 3 1/2 strips, stitch the 1 1/2" squares using the same method to either end of the strip. Trim. Press toward the strip.
5. Following the layout above, stitch the blocks to each other.
6. Press the top and bottom rows toward the center and the middle row toward the outside.
7. Sew the blocks into rows. Press the center seams toward the outside.
8. Square the block to 9 1/2 x 9 1/2".



Cutting the borders

- Cut 12—2 1/2 x 3 1/2 from border fabric
- Cut 4—2 1/2 x 2 1/2 from border fabric for corners
- Cut 28—1 1/2 x 1 1/2 for corner flips
- Cut 2—2 1/2 x wof for binding

Assembling the borders and finishing the table topper

1. Draw a diagonal line on the back of each 1 1/2" square.
2. Using the method above, on the 2 1/2 x 3 1/2" pieces, attach a square to the left and right corners of the piece. Trim and press away from the strip.
3. Attach 1 1/2" squares to one corner of each of the four 2 1/2" squares. Trim and press toward the square.
4. Join rectangular units together in groups of three. Sew to the left and right side of the center block.
5. Join the remaining rectangular units together, adding a 2 1/2" square to either end, with the corner flip toward the center block. Sew to the top and bottom.
6. Layer your table topper with batting and backing and quilt as you wish.
7. Attach binding in the traditional manner. Press and enjoy your table mat!

